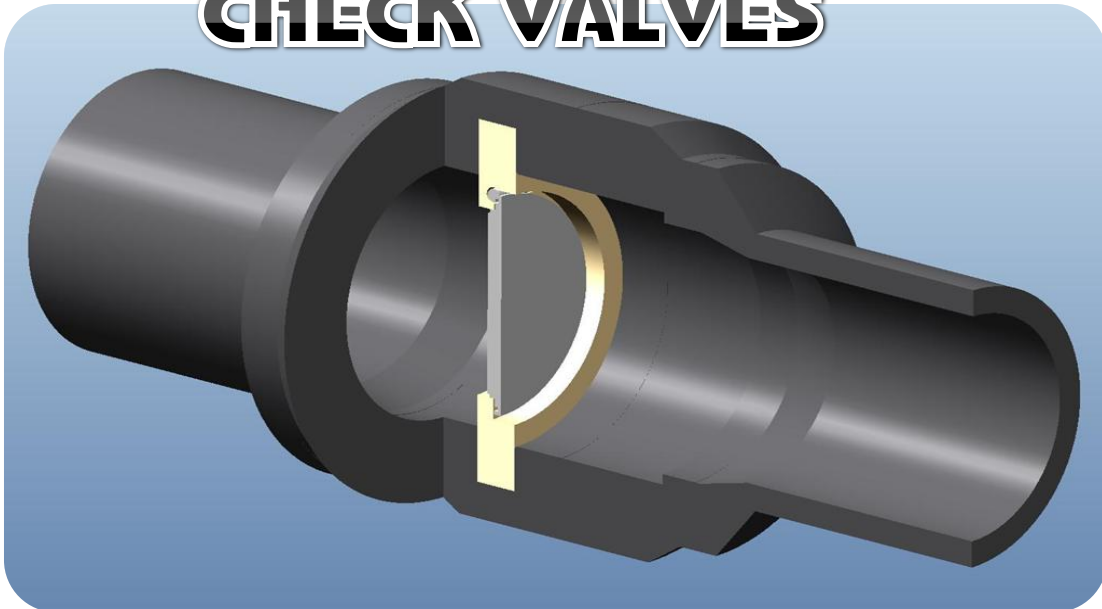


TIMESAVER[®]

CHECK VALVES



Made with the durability and strength of HDPE, TimeSaver[®] Check Valves and are designed to fully prevent back flow (reflux). These units are manufactured to provide years of service and performance. The butt-fused valve creates a leak-free system. With the ease of installation, there is no need for flange

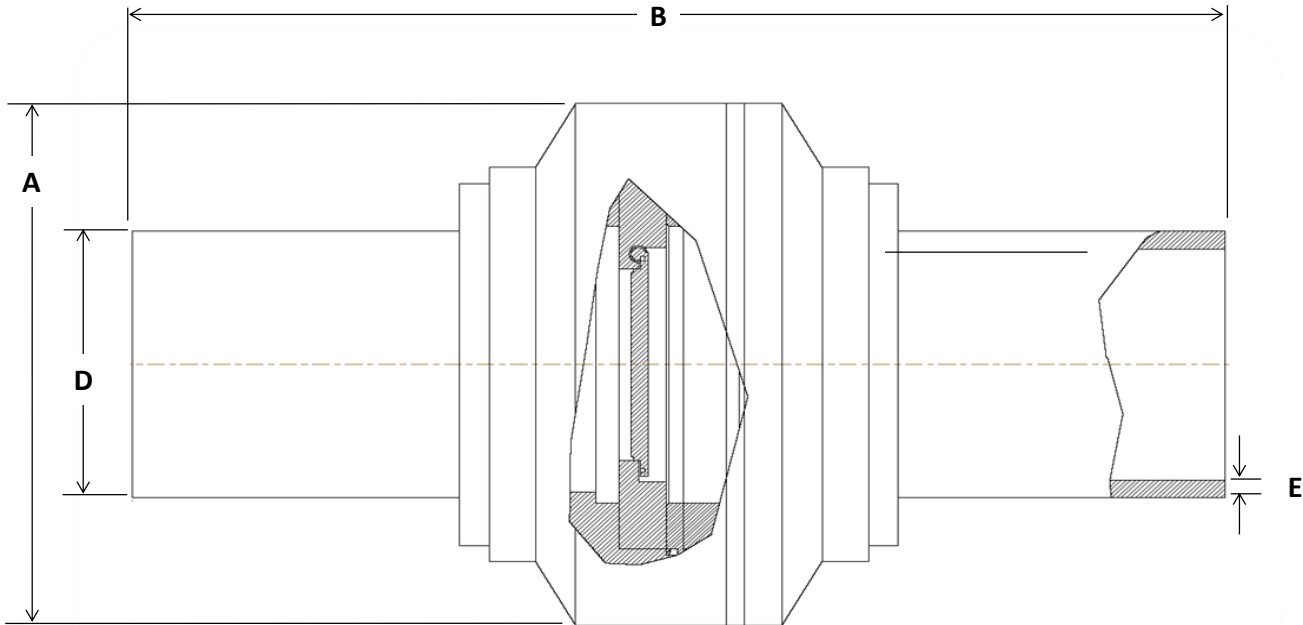


- Polypropylene check flap
- HDPE (PE 100) shell
- Designed for quick, direct heat fusion into the polyethylene piping system



www.TimeSaverValve.com

TIME SAVER™ BUTT-FUSE CHECK VALVE



CHECK VALVE

Size IPS**	Body OD (Inches) "A"	Valve Length (Inches) "B"	Height (Inches)	Pipe End OD (Inches) "D"	Min. Wall SDR - 11 (Inches) "E"	Weight (Lbs.)	Pressure Rating (psi)	Cv @ 90°
2	6.000	12.80	6.000	2.375	0.216	4.30	145	22
3	6.608	14.50	6.608	3.500	0.318	8.50	145	78
4	8.600	18.90	8.600	4.500	0.409	10.50	145	300
6	10.400	23.10	10.400	6.625	0.602	21.40	145	841
8	12.750	24.30	12.750	8.625	0.784	35.70	100	1190
10	AVAILABLE FOR SPECIAL ORDER							

Cv values are estimated.

** DIPS sizes are available

METRIC sizes are available

**** Number of feet of pipe with the same pressure drop as experienced across the valve at 10 ft./sec.

LARGER SIZES AVAILABLE FOR SPECIAL ORDER

• **Body: High Density Polyethylene**

PE100/4710

1600psi HDB at 73° F - ASTM D 2837

ESCR > 10000 hours - ASTM D 1693

Tensile Strength = 3500 psi - ASTM D 638