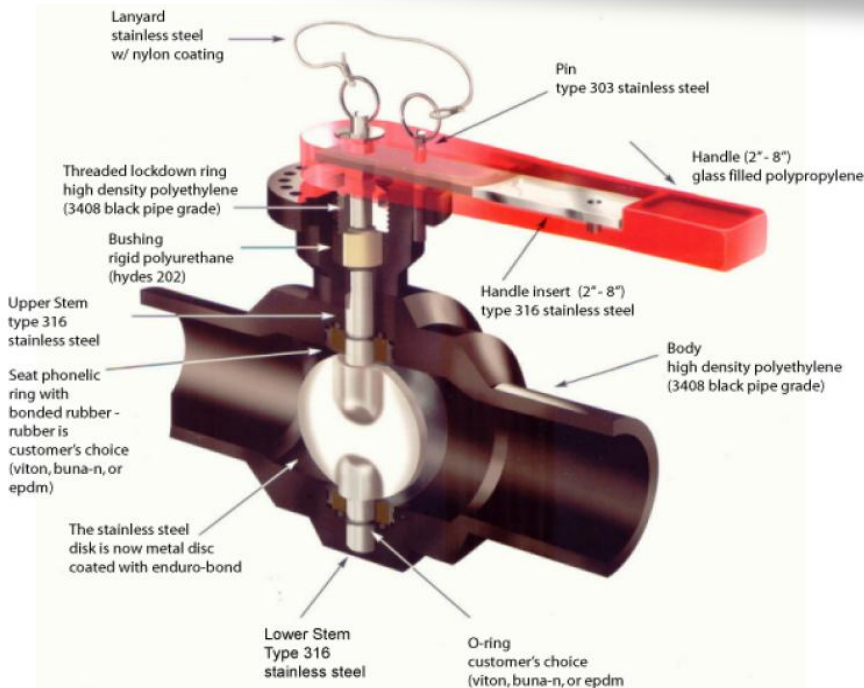
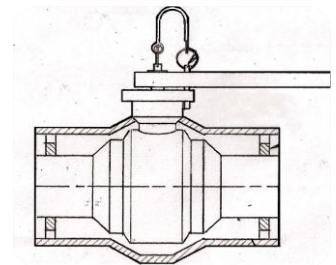
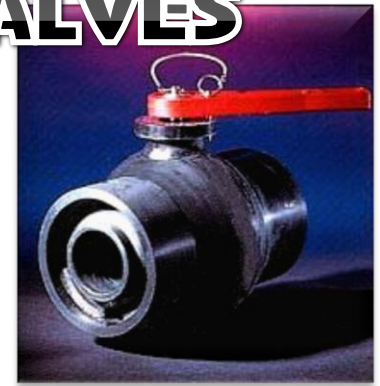
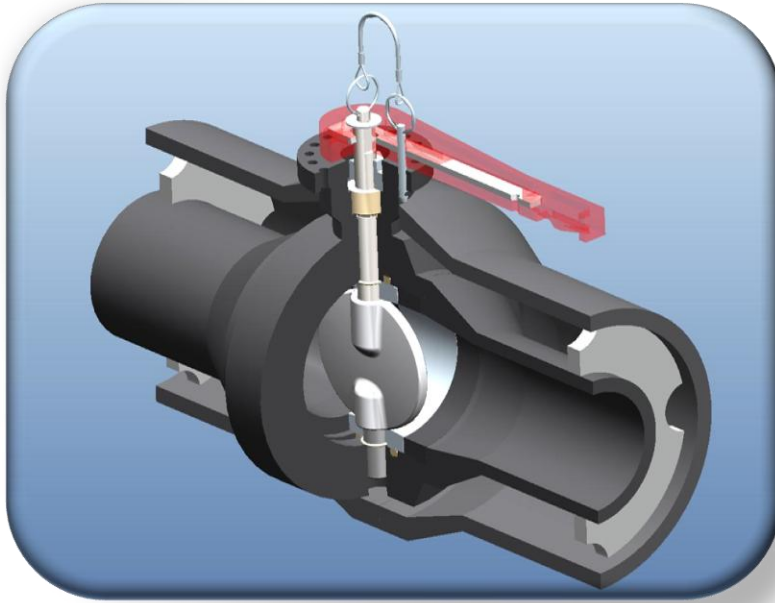


# TIMESAVER<sup>®</sup>

## DUAL CONTAINED VALVES



Butterfly Butt-Fused Valves designed for quick, direct heat fusion into the polyethylene piping system, the butterfly butt-fused valve creates a leak-free system. With the ease of installation, there is no need for flange adapters, spacers, back-up rings, nuts, bolts or gaskets.

- 20 Years + Design Life

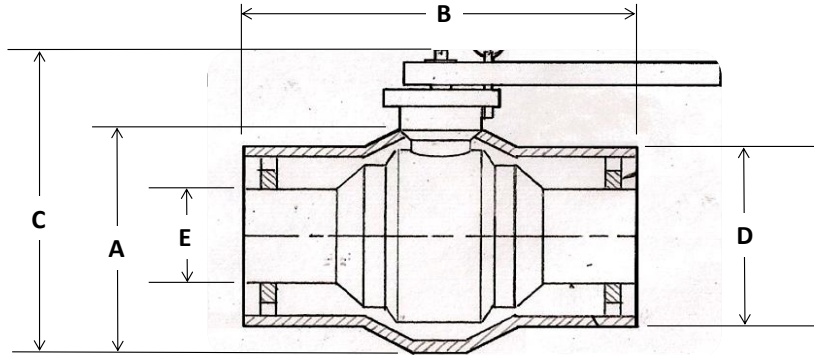
- All TimeSaver<sup>®</sup> valves are individually tested to MSS-SP-67 Type 1, 100% visual hydrostatic test at 1.5 times

Used to control hazmat flow and removal, the Time Saver<sup>®</sup> Dual Containment butterfly valve features a double pipe housing. This unit can be used in existing lines or with dual containment HDPE pipe.



TIMESAVERVALVE.COM

# TIME SAVER™ BUTTERFLY BUTT-FUSE VALVE



## DUAL CONTAINED

Size IPS**	Body OD (Inches) "A"	Disc OD (Inches)	Cv @ 90°	Δ P psi Valve @ 10 Ft./Sec.	Equiv Lg. SDR - 11 Pipe-Ft.****	Valve Length (Inches) "B"	Height (Inches) "C"	Weight (Lbs.)	Pipe End OD (Inches) "D / E"	Pipe End Min. Wall SDR - 11 (Inches)
4 X 2	6.63	2.27	145	0.400	5.30	12.60	9.82	6.40	4.50 / 2.375	0.265 / 0.216
6 X 3	8.63	3.31	325	0.400	7.70	12.60	11.63	15.00	6.63 / 3.50	0.602 / 0.318
8 X 4	10.75	4.17	590	0.300	8.60	18.12	13.29	29.28	8.63 / 4.50	0.507 / 0.409
10 X 6	12.75	6.06	1950	0.200	5.70	20.40	15.94	43.96	10.75 / 6.63	0.632 / 0.602
12 X 8	AVAILABLE FOR SPECIAL ORDER									

Cv values are estimated.

\*\* DIPS sizes are available

METRIC sizes are available

\*\*\*\* Number of teet of pipe with the same pressure drop as experienced across the valve at 10 ft./sec.

LARGER SIZES AVAILABLE FOR SPECIAL ORDER

## FULL PORT

Size IPS**	Body OD (Inches)	Disc OD (Inches)	Cv @ 90°	Δ P psi Valve @ 10 Ft./Sec.	Equiv Lg. SDR - 11 Pipe-Ft.****	Valve Length (Inches)	Height (Inches)	Weight (Lbs.)	Pipe End OD (Inches)	Pipe End Min. Wall SDR - 11 (Inches)
2	5.00	2.27	145	0.400	5.30	13.00	9.00	4	2.375	0.216
3	6.37	3.31	325	0.400	7.70	13.00	10.50	10	3.500	0.318
4	8.40	4.17	590	0.300	8.60	18.20	12.50	15	4.500	0.409
6	10.35	6.06	1950	0.200	5.70	20.50	15.00	24	6.625	0.602
8	15.00	7.85	3250	0.200	8.00	24.00	20.00	80	8.625	0.784
10	17.75	9.77	5000	0.130	10.60	25.00	23.00	105	10.750	0.977
12	20.58	11.81	7500	0.120	11.30	32.00	26.00	145	12.750	1.159
14	22.50	13.20	10000	0.100	10.30	34.00	* 37.42	175	14.000	1.217
16	26.50	15.24	13600	0.100	11.00	44.00	* 42.38	290	16.000	1.391
18	30.00	17.75	18000	0.084	11.88	50.00	48.13	535	18.000	1.636

Cv values are estimated.

\* Includes gear operator and 18" handwheel

\*\* DIPS sizes are available

METRIC sizes are available

\*\*\*\* Number of teet of pipe with the same pressure drop as experienced across the valve at 10 ft./sec.

LARGER SIZES AVAILABLE FOR SPECIAL ORDER

<ul style="list-style-type: none"> <li>• <b>Body: High Density Polyethylene</b></li> </ul>	Cell Class PE345444C - ASTM D 3350 1600psi HDB at 73° F - ASTM D 2837 ESCR > 10000 hours - ASTM D 1693 Tensile Strength = 3500 psi - ASTM D 638
<ul style="list-style-type: none"> <li>• <b>Handle:</b></li> </ul>	10" - 12", forged type 316 stainless steel. 14" & up, gear operated with hand wheel.
<ul style="list-style-type: none"> <li>• <b>Disk: Stainless Steel Type 316</b></li> </ul>	Yield Strength > 30,000psi
<ul style="list-style-type: none"> <li>• <b>Stem: Stainless Steel Type 316</b></li> </ul>	Yield Strength > 30,000psi
<ul style="list-style-type: none"> <li>• <b>Seats:</b></li> </ul>	EPDM - Standard Buna N - Optional Viton - Optional Other materials on special request
<ul style="list-style-type: none"> <li>• <b>Pressure Rating: All Sizes</b></li> </ul>	160psi
<ul style="list-style-type: none"> <li>• <b>Tests:</b></li> </ul>	Every valve is performance tested per MSS SP-67 Type I (no leak allowed) requirements and leakage tested per AWWA C 504 @ 160psi and 73°F